

SIEMENS



[www.usa.siemens.com/cerberus-pro](http://www.usa.siemens.com/cerberus-pro)

# Cerberus<sup>®</sup> PRO

Sales Guide

[Intro >](#)

[50 Point Panel >](#)

[250/500 Point Panel >](#)

[Intelligent Voice  
Communication System >](#)

[Detectors >](#)

## Introduction

Cerberus® PRO – answer versatile challenges with powerful fire protection

Cerberus® PRO is an intelligent fire protection system for fast, reliable fire detection, alarm signaling, and control. Its wide portfolio includes innovative products with intelligent technology – varied control panels, fire detectors, peripheral devices, and accessories – making it a comprehensive fire protection system.

### New business opportunities, new streams of revenue

Fire safety is about protecting people and assets and securing business processes and continuity. The powerful fire protection Cerberus PRO offers makes it an excellent choice for a variety of applications, including telecommunications, data centers, small industrial facilities and commercial buildings. It provides a stand-alone control panel for smaller applications, and networkable panels for larger, more complex applications. Also, our Cerberus PRO Intelligent Voice Communication system provides occupants of mid-sized facilities with the same safety technology that's normally reserved for high end facilities – fast, reliable fire detection, intelligent emergency communication capability, and complete operator control – all in one cost effective

package. Additionally, Cerberus PRO provides a broad range of detectors with more than 20 selectable detection profiles, allowing them to be used in clean or dirty environments. This presents new opportunities in new applications, where we can offer a tailored detection solution:

- Advanced Multi-Criteria detection capabilities with **ASAtechnology™** and CO detection for demanding environments
- Complete range of detectors for virtually any kind of fire phenomena which allows for potential upselling
- Scalable solutions for larger applications

### A winning formula for success

This guide equips you with the tools you need to effectively promote and sell this new product portfolio. With your developed customer relationships and local expertise, and our innovative and reliable technology, we can bolster your position as an industry leader in fire safety, and enjoy exponential revenue growth.

Previous



[1]



Next

Intro >

50 Point Panel >

250/500 Point Panel >

Intelligent Voice  
Communication System >

Detectors >

# Table Of Contents

Cerberus® PRO – answer versatile challenges with powerful fire protection

## 50 Point Panel

Product Overview . . . . .	3
Selling Points . . . . .	3
Qualifying Questions . . . . .	4
Benchmark Analysis . . . . .	5

## 250/500 Point Panel

Product Overview . . . . .	6
Selling Points . . . . .	6
Qualifying Questions . . . . .	7
Benchmark Analysis . . . . .	8-11

## Cerberus PRO Intelligent Voice Communication

Product Overview . . . . .	12
Selling Points . . . . .	12
Qualifying Questions . . . . .	13
Benchmark Analysis . . . . .	14-15

## Detectors

Advanced Detectors with <b>ASA</b> technology Product Overview . . . . .	16-17
Advanced Detectors with <b>ASA</b> technology Features & Benefits . . . . .	18-19
Standard Detectors Product Overview . . . . .	20
Standard Detectors Features & Benefits . . . . .	21

Sales Collateral . . . . .	22
----------------------------	----

# FC901 – 50 Point Fire Control Panel

## Product Overview



Cerberus PRO offers a cost-effective stand-alone fire control panel for smaller, simpler applications. You can connect up to 50 detectors and peripheral devices. The detectors can be connected either via one class A or two class B CNET circuits. Notification devices can be connected either via one class A or two class B Notification Appliance Circuits (NAC). An RS485 connection allows you to install remote terminals to review and operate the panel from another location in the building. Additionally, the built-in Digital Alarm Communication Transmitter (DACT) sends system information to off-site monitoring stations.

The FC901 Fire Control Panel, a 50 point panel, is a cost-effective stand-alone fire control solution for smaller, simpler applications.

### Smaller facilities

Restaurants • Strip Malls • Small Retail Outlet Stores • Apartment Complexes • Banks • Cinemas • Department Stores

### Commercial buildings

Telecommunication Systems • Smaller Corporate Headquarters • Municipal facilities such as Court Houses or Police Stations • Light Manufacturing • Stand Alone Warehouse • Food Stores • Places of Worship

### Healthcare

Smaller Hospitals and Clinics • Nursing Homes • Retirement or Assisted Living Facilities

### Buildings less than 75 feet in height

Dormitories • Small Motels • Extended Stay Facilities

## SELLING POINTS

- Cost-effective, stand-alone solution for small applications
- Connects up to 50 devices
- Easy, straightforward operation
- Fast installation and easy servicing
- Compatible with the latest Siemens detector technology

Previous



[3]



Next

[Intro >](#)

[50 Point Panel >](#)

[250/500 Point Panel >](#)

[Intelligent Voice  
Communication System >](#)

[Detectors >](#)

## FC901 – 50 Point Fire Control Panel

### Qualifying Questions

#### QUALIFYING QUESTIONS

**1. How dispersed are the devices from the panel?**

The FC901 loop can be up to 3,000 feet long using 18 gauge wire.

**2. What type of building is it? (Bank, Cinemas, Small Restaurant)**

A single FC901 can support up to 50 points, consisting of any combination of detectors and modules.

**3. Do you anticipate any future expansion plans?**

The FC901 can meet your customers' smaller facility needs with a total mix of 50 addressable devices.

**4. Are you constrained by budget limitation?**

For smaller applications, the FC901 is a cost-effective, compact fire alarm control panel that supports high-end technology and quality at a reasonable price.

**5. Do you have a need for a Voice Evacuation System?**

The stand-alone voice system is available as an add-on to the FC901 and offers one of the most versatile voice evacuation systems available.

**6. Does your facility have a fire sprinkler/suppression system and are you looking for a panel to connect?**

While our FC901 system does not support releasing technologies, you may use our FC922 and FC924 to meet this specification.

Previous



[4]



Next

[Intro >](#)

[50 Point Panel >](#)

[250/500 Point Panel >](#)

[Intelligent Voice  
Communication System >](#)

[Detectors >](#)

## FC901 – 50 Point Fire Control Panel

### Benchmark Analysis

FEATURE	SIEMENS FC901	FIRELITE MS-9050UD	SILENT KNIGHT 5700	FIREWARDEN-50
Addressable Signaling Line Circuits (SLCs)	1 (Style 6,7) or 2 (Style 4)	1 (Style 4,6,7)	1 (Style 4,6,7)	1 (Style 4,6,7)
Intelligent Addressable Detectors	Any Mix of 50	Any Mix of 50	Any Mix of 50	Any Mix of 50
Maximum Addressable Modules	Any Mix of 50	Any Mix of 50	Any Mix of 50	Any Mix of 50
Maximum Addressable Devices	50	50	50	50
Built-in Notification Circuits	2 Class B or 1 Class A	2 Class B or 2 Class A	2 Class B or 1 Class A	2 Class B or 2 Class A
Alarm, Trouble, and Supervisory Relays	Yes	Yes	Yes	Yes
Programmable Relay	Yes	Yes	Yes	Yes
Approved for Releasing	No	No	Yes (Water Deluge)	No
Pre-alarm Warning	Pre-Signal Plus Delay Function	Pre-Signal Plus Delay Function	Yes	Yes
Addressable 2-Wire Detector Monitor Module	Yes	Yes	No	Yes
100% Field Programmable from Built-in Keypad	Yes	Yes	Yes	Yes
Auto Programming Feature	Yes (Devices must be preprogrammed)	Yes (Devices must be preprogrammed)	Yes (Devices must be preprogrammed)	Yes (Devices must be preprogrammed)
Silence Inhibit	Yes	Yes	No	Yes
Reset Inhibit Timer	Yes	Yes	No	Yes
Remote Upload/Download	No	Yes	Yes	Yes
EIA-232 Serial Printer	No	Yes	Yes	Yes
Optional 80 Column Printer Option	No	Yes	Yes	Yes
EIA-485, Serial Remote Annunciator Interface	Yes	Yes	Yes	Yes
Main Power Supply	6.5 A	3.0 A	2.5 A	3 A
One Person Walk Test	Yes	Yes	Yes	Yes
Optional High Capacity DACT Communicator	Standard on Board	Standard on Board	Standard on Board	Standard on Board

Panels and associated information are based on product documentation published on each company's public website as of 6/19/2014.

Previous



[5]



Next

[Intro >](#)

[50 Point Panel >](#)

[250/500 Point Panel >](#)

[Intelligent Voice  
Communication System >](#)

[Detectors >](#)

# FC922/FC924 – 250/500 Point Fire Control Panels

## Product Overview



With the networkable control panels from Cerberus PRO, you can easily accommodate larger, complex applications. Depending on the control panel, you can connect up to 504 detectors and peripheral devices. Peer-to-peer networking allows up to 16 panels to be connected. This makes Cerberus PRO a flexible and scalable solution that lets you easily and quickly adapt to future changes in building structure. Additionally, the networkable panels can also be integrated into a management station from Siemens. Both the FC922 and FC924 panels are compatible with addressable field devices used on other Siemens fire systems. This translates into easy and cost-efficient migration strategies.

Networkable FC922/FC924 fire control panels, with 250 and 500 points, accommodate larger, complex applications.

### 250-Point: small to medium & 500-Point: medium to large facilities

- Restaurants • Strip Malls • Small Retail Outlet Stores • Nursing Homes
- Smaller Hospitals and Clinics • Retirement or Assisted Living Facilities

### Buildings less than 75 feet in height for 250-Point & less than 150 feet for 500-Point

- Dormitories • Small Motels • Extended Stay Facilities

## SELLING POINTS

- Smart product features to increase safety
- Safe & easy installation, commissioning and testing
- Easy serviceability through remote access
- Flexible and homogeneous system, for medium to large systems
- Easy, straightforward operation
- Fast installation and easy servicing
- Dependable life safety detection technology based on global experience

*Cerberus PRO fire control panels combine high security standards with the latest technology, making them an excellent choice for a variety of applications. The different control panels increase flexibility in system planning and keep a system scalable for the future.*

Previous



[6]



Next

[Intro >](#)

[50 Point Panel >](#)

[250/500 Point Panel >](#)

[Intelligent Voice  
Communication System >](#)

[Detectors >](#)

## FC922/FC924 – 250/500 Point Fire Control Panels

### Qualifying Questions

#### QUALIFYING QUESTIONS

**1. How dispersed are the devices from the panel?**

The FC922 and FC924 loop can be up to 5000 feet long using 18 gauge wire.

**2. What type of building is it?**

**(College Campus, Corporate Headquarters, Nursing Home)**

A single networkable FC922 can connect up to 252 devices and FC924 can connect up to 504 devices with 2 NACs expandable to 4.

**3. Do you anticipate any future expansion plans?**

The FC922/FC924 can meet your customers' medium/large facility with 2 NACs expandable to 4.

**4. Are you constrained by budget limitation?**

For medium/larger applications, the FC922/FC924 are compact, cost effective Fire Alarm Control Panels that supports high-end technology and quality at a reasonable price.

**5. Do you have a need for a Voice Evacuation System?**

A stand-alone voice system is available as an add-on for the FC922/FC924 and offers one of the most versatile voice evacuation systems available.

Previous



[7]



Next

[Intro >](#)

[50 Point Panel >](#)

[250/500 Point Panel >](#)

[Intelligent Voice  
Communication System >](#)

[Detectors >](#)



## FC922 250 Point Fire Control Panels

### Benchmark Analysis

FEATURE	SIEMENS FC922	EST EST2	NOTIFIER NFS-320	FCI 7100
LCD Display	40 Characters by 8 Lines	20 Characters by 4 Lines	40 Characters by 2 Lines	No Lines Recorded
Programmable Control Keys	7	None	None	None
Programmable LEDs	10 up to 96 with Options	None	Yes	None
System Point Capacity	252	380	318	197
Addressable Signaling Line Circuits (SLCs)	4 Standard	1 Standard, Expandable to 2	1 Standard	2 Standard
Points Per SLC	252 over 4 Circuits	190 (96 Detectors, 94 Modules)	318 (159 Detectors, 159 Modules)	197 over 2 Circuits
Weak Device Answer Detection	Yes	No	No	No
Auxillary Relays (Panel)	4	3	4	0
NAC Circuits (Panel)	2 Class B / 1 Class A @ 3.0 A each	2 @ 3.5 A each; total 3.5 A	4 @ 1.5 each; total 6 A	2 @ 1.5 A each
Expansion NAC Module	Yes	Yes	Yes	Yes
# NACs with Expansion	4 Class B or 2 Class A	2 Class B; Class A w/Adapter Module	4 Class A/B	2 Class A with expansion module
NAC Coding	Temporal; March Time; CA Code	Temporal; March Time Fast/Slow; Zone (Optional)	Temporal; March Time; CA Code	Temporal; March Time; CA Code; Zone
Power Supply	6.5 A	4.5 A or 6.4 A	6 A	3.335 A
Expansion Power Supply	11.5 A with opt 300WPS	External	6 A or 8 A	No
Battery Charger	100 Ah (>32 Ah in Separate Cabinet)	30 Ah	18 Ah - 200 Ah	31 Ah
Local Energy Master Box	Optional	Optional	Optional	Optional
Reverse Polarity	Optional	Optional	Optional	Optional
Disconnect Method	Thru Menu	Thru Menu	Card Switch	Card Switch
DACT (Internal/External)	Optional	Optional	Optional	Optional
Common Event DACT	Yes	Yes (Alarm, Trouble, Supervisory)	Yes (Alarm, Trouble, Security, Supervisory)	Optional
Point Reporting (Serial) DACT	Yes	Yes	Yes	Yes

Panels and associated information are based on product documentation published on each company's public website as of 6/19/2014.

Previous



[8]



Next

[Intro >](#)

[50 Point Panel >](#)

[250/500 Point Panel >](#)

[Intelligent Voice  
Communication System >](#)

[Detectors >](#)

## FC922 250 Point Fire Control Panels

### Benchmark Analysis (continued)

FEATURE	SIEMENS FC922	EST/ EST2	NOTIFIER NFS-320	FCI 7100
Field Programmable	Laptop	Panel Keypad; Laptop	Panel Keypad; Laptop	Panel Keypad; Laptop
Remote LCD Vectoring by Event	Yes	Yes	Yes	Yes
Custom Labels	40-character	40-character	12-character	None
One Man Walk Test	Yes	Yes	Yes	Yes
Historical Log	Yes	Yes	Yes	Yes
Total Number of Events	2,000	576	800 all Events	280 Events
Separate Alarm/Supervisory/Trouble Logs	500 Alarm Event-only File	None	200 Event Alarm Log	280 Event Log
Programmable Relay Output	Yes	No	No	No
Printed Reports	Yes	Yes	Yes	Yes
Environmental Compensation	Yes	Yes	Yes	Yes
Temperature Monitoring	Yes	No	No	No
Programmable Relay Base	Yes	No	No	No
Short Circuit & Ground Fault Isolator	Short Circuit Only	Short Circuit Only	Short Circuit Only	Yes
Combination Photo/Heat Sensor	Yes + CO as well	Yes (3D or SIGA-PHS)	Yes	Yes
Separate Outputs for Photo, Heat, & Gas	Yes	No	No	No
Programmable Sounder Base	Yes	Yes	Yes	Yes
Printers	Yes	Yes	Yes	Yes
Remote LCD Annunciators	16 Per Panel	32 Per Panel	32 Per Panel	5 Per Panel
Graphic Drivers	No	Yes	Yes	Yes
Network Node	Yes	(Yes) EST2 Network Only	Yes	Yes
Alarm Power Supply	6A	4A	6A	3A
Fiber Optic Support	Yes	No	Yes	Yes
Active Status Reminder (Alarm/Supervisory/Trouble)	Yes including Gas	No	No	No

Panels and associated information are based on product documentation published on each company's public website as of 6/19/2014.

## FC924 500 Point Fire Control Panels

### Benchmark Analysis

FEATURE	SIEMENS FC924	SIMPLEX 4010	NOTIFIER NFS2-640	FCI NETSOLO
LCD Display	320-Character (40 Character by 8 Lines)	80-Character	Standard 80-Character Display, 640-Character Large Display, or Display-less.	80 Character (Optional)
Programmable Control Keys	7	10 Function Menu Control Keys of which 2 are Programmable	24	No
Programmable LEDs	10 up to 130	3	96	48
System Point Capacity	504	250	636	394
SLCs (max)	8 Standard	1 Standard	1 Standard, Expandable to 2	2 Standard
Points Per SLC	252 (any mix) over 4 Circuits	250 (any mix)	318 (159 Detectors, 159 Modules)	394 (198 Detectors, 196 Modules)
AUX RELAYS (Panel)	4	2	4	4
Built-in Notification Circuits	1 Class A, 2 Class B @ 3.0 A	4 @ 2 A	4 @ 6A	2 Class B
# NACs	4 Class B or 2 Class A	8	4	4
Class A/B	A/B	B	A/B	B
Power Supply	6.5 A or 11.5 A	4A	6A	9A
Battery Charger	100 Ah (> 32 Ah in Separate Cabinet)	25 Ah Panel; 50 Ah Optional	Supports 18-200 Ah Batteries. (26 Ah in Separate Cabinet)	31-55 Ah
Local Energy Master Box	Yes	Selectable	Optional	Yes
DACT (Internal)	Optional	Standard	Optional	Standard
Point Reporting (Serial) DACT	Yes	Yes	Yes	Yes
Field Programming	Laptop	Panel Keypad; Laptop	Panel Keypad; Laptop	Panel Keypad; Laptop
Remote LCD Vectoring by Event	Yes	Yes	Yes	No
One Person Walk Test	Yes	Yes	Yes	Yes
Historical Log	Yes	Yes	Yes	Yes
Total Number of Events in History Log	2,000	200	800	500

Panels and associated information are based on product documentation published on each company's public website as of 6/19/2014.

## FC924 500 Point Fire Control Panels

### Benchmark Analysis (continued)

FEATURE	SIEMENS FC924	SIMPLEX 4010	NOTIFIER NFS2-640	FCI NETSOLO
Separate Alarm/Supervisory/Trouble Logs	500 Alarm Event-only File	50 Alarm; 50 Supv; 100 Trouble	800+ Separate 200-event Alarm-only File	800+ Separate 200-event Alarm-only File
Programmable Relay Output	Yes	Relay Base Not Programmable	Yes	Relay Base Not Programmable
Printed Reports	Yes	Yes	Yes	Yes
Environmental Compensation	Yes	Yes	Yes	Yes
Ambient Temperature monitoring	Yes	Yes	No	No
Programmable Relay Base	Yes	Yes	No	No
Short Circuit & Ground Fault Isolator	Short Circuit Only	Yes	Yes	Yes
Combination Photo/Heat Detector	Yes + CO as well	Yes	Yes	Yes
Separate Outputs for Photo & Heat	Yes	Yes	Yes	Yes
Programmable Sounder Base	Yes	Yes	Yes	Yes
Printers	Yes	Yes	Yes	Yes
Remote LCD Annunciators	16 Per Panel	6 Per Panel	32 Per Panel	Yes
Graphic Drivers	No	Yes	Yes	No
Network Node	Yes	Public Points Only	Yes	Yes
Alarm Power Supply	6 A	8 A	6 A	3 A
Fiber Optic Support	Yes	Yes	Yes	Yes
Active Status Reminder (Alm/Supv/Tbl)	Yes, Also Gas	Yes	Yes	Yes
Flow/Tamper on One IAM (Quad-state)	Yes, 4 I/O Module	Yes	Yes, Dual Input Module	Yes, Dual Input Module
Analog Detectors	FirePrint/ <b>ASA</b> technology	TrueAlarm	FlashScan	FlashScan

Panels and associated information are based on product documentation published on each company's public website as of 6/19/2014.

Previous



[11]



Next

[Intro >](#)

[50 Point Panel >](#)

[250/500 Point Panel >](#)

[Intelligent Voice  
Communication System >](#)

[Detectors >](#)

# FV922/FV924 – 250/500 Point Intelligent Voice Communication Systems

## Product Overview



The Cerberus PRO Intelligent Voice Communication system is a technologically advanced and highly addressable fire-with-voice system. Through the use of its multi-processor 'Network' design – along with its ability to utilize intelligent detection devices – Cerberus PRO epitomizes a flexible and highly configurable fire protection system with integrated voice evacuation. The Cerberus PRO Intelligent Voice Communication system offers occupants of mid-sized facilities with the same safety technology that's normally reserved for high-end facilities.

Cerberus PRO Intelligent Voice Communication systems are ideally suited for small and mid-sized applications, with each panel capable of providing up to 252 (Model FV922) and 504-point (Model FV924), addressable points. Additionally the built-in Digital Alarm Communication Transmitter (DACT) sends system information to off-site monitoring stations.

### 250-Point and 500-Point: small to mid-sized buildings

- K-12 schools and campuses • Low mid-rise hotels and motels
- Retail (mall, convenience) • Medical office/office parks
- Sporting venues/theatres/concert halls • Banquet halls • Churches
- Apartment complexes

## SELLING POINTS

- Best intelligibility for essential messages
- Faster, easier, costs less, and requires less space than similar mid-range voice installations
- Customized messages reach specific areas at the same time
- Fire and voice (VoIP) networking over the same copper or fiber connection for simpler installation and high quality audio distribution
- Meets requirements as both fire alarm system and emergency communication system (UL 864 and UL 2572)
- Best survivability for small voice systems
- Versatile, flexible, and efficient system that is scalable to today's needs and adaptable as conditions change
- Compatible with the latest Siemens detection technology

Previous



[12]



Next

[Intro >](#)

[50 Point Panel >](#)

[250/500 Point Panel >](#)

[Intelligent Voice  
Communication System >](#)

[Detectors >](#)

# FV922/FV924 – 250/500 Point Intelligent Voice Communication Systems

## Qualifying Questions

### QUALIFYING QUESTIONS

- 1. What type of building is it (Retail, banquet halls, churches)?**  
A single networkable FV922 can connect up to 252 devices and FV924 can connect up to 504 devices, consisting of any combination of detectors or modules.
- 2. Do you anticipate any future expansion plans?**  
The system's peer-to-peer networking allows up to 16 panels to be connected, so the system can easily grow as the building's needs change.
- 3. Are you concerned about budget limitations?**  
The Cerberus PRO Intelligent Voice Communication system installation is faster, easier, cost effective, and requires less space than similar solutions.
- 4. Does your customer require differentiations between emergency messages?**  
The system contains a built-in, 2 channel message player that supports 64 digital messages, equipping you to deliver differentiated messages for any emergency situation.

## FV922/FV924 – 250/500 Point Intelligent Voice Communication Systems

### Benchmark Analysis

FEATURE	SIEMENS CERBERUS PRO Intelligent Voice Communication	SILENT KNIGHT 5820XL-EVS	NOTIFIER NFS-640	VIGILANT VM
Integration with Fire Alarm	Yes	Yes	Yes	Yes
Addressable Points	504	198	636	250 Standard, 500 With Optional Second Loop
Message Player Built-in	Yes	Yes	Yes	Yes
Channels	2 Channel Message Player	Single Channel	Single or Multi-Channel Voice	3 Channels
Variable Number of Amplifiers	Up to 3 With or Without Backup	Up to 4	Up to 4 Amplifiers	15
Power	Up to 2400 W (Over 16 Nodes) Plus Unlimited Boosters	Support for 4 Amplifiers for a Total of 500W	Up to 4 Amplifiers For a Total of 260 Watts	Support for 15 Amplifiers Up to 750 Watts
Number of Speaker Circuits Per Amplifier	2 Speakers Circuits Per Amplifier	Each Amplifier has 4 Speaker Circuits Expandable to Eight	1 Expandable to 2	4
Number of Speaker Zones Per System	3 Per Panel Or 48 Per System	32 Per System	Not Available	Not Available
Number of Microphone Stations	2 Per Panel	1 Per Panel	1 Per Panel	1 Per Panel
Page From One Node to Another	Yes	No	No	Yes
Global Page	Yes	No	No	Yes
Distributed Amplifiers	Yes, 16 Nodes Plus Boosters	Yes, Up to 4	No	No
Printer/Peripheral Connection	Yes	Yes	Yes	Yes
Digital Communicator	Yes	Yes	Yes	Yes
Message Priority	Yes	Yes	Yes	Yes
UL Listed to Mass Notification	Yes	Yes	Yes	Yes
Removable Terminal Blocks	Yes	No	No	Yes

Panels and associated information are based on product documentation published on each company's public website as of 6/19/2014.

Previous



[14]



Next

[Intro >](#)

[50 Point Panel >](#)

[250/500 Point Panel >](#)

[Intelligent Voice  
Communication System >](#)

[Detectors >](#)

## FV922/FV924 – 250/500 Point Intelligent Voice Communication Systems

### Benchmark Analysis (continued)

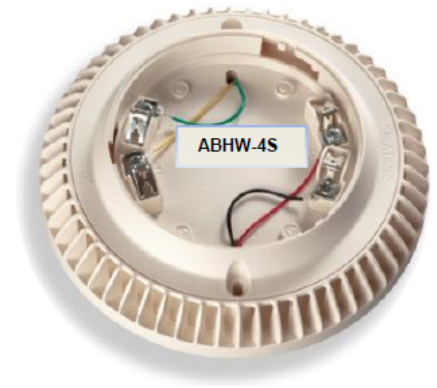
FEATURE	SIEMENS CERBERUS PRO Intelligent Voice Communication	SILENT KNIGHT 5820XL-EVS	NOTIFIER NFS-640	VIGILANT VM
Message Count	32 Preprogrammed and 32 Custom Messages	15	Variable Count	Variable Count
History Log	Yes, 2,500 Events	Yes, 1,000 Events	800 Event Capacity in Nonvolatile Memory, Plus Separate 200-Event Alarm-Only File	1,100 Events
Message Duration	3 Minutes, Storage of 64 Digital Messages	Yes, 15 Recordable 1 Minute Messages	32 Minutes at Standard Quality, 4 Minutes at High Quality	39 Seconds Per Message, 2 Minutes Total Storage
Communicate Over IP	Yes	No	No	Yes
Auxiliary Audio In/Out	Aux In and Aux Out Available	Aux In Available	Aux In and Aux Out Available	Aux In and Aux Out Available
Firefighters Telephone	No	Yes	Yes	Yes, Optional

Panels and associated information are based on product documentation published on each company's public website as of 6/19/2014.



## Advanced Detectors

### Overview



Advanced detectors are the best choice for more demanding applications with deceptive phenomena, when extremely fast response time and the highest level of prevention of false alarms is needed. With features like the innovative **ASAtchnology™** (Advanced Signal Analysis) and a No False Alarm Guarantee, these detectors are a great choice for protecting particularly demanding areas – whether sensitive or harsh. Environments like data centers or industrial production facilities need highly advanced technology with no false alarms to provide maximum safety and optimal protection.

#### Typical application areas for advanced detectors:

With the capability of earliest detection of smouldering & flaming fires by the combustion of liquid and solid matter, **ASAtchnology** fire detector OOH941 and **ASAtchnology** fire and carbon monoxide (CO) detector OOH941 are especially suited for:

- Data centers and IT equipment • Telecommunications facilities • Hospitals and nursing homes • Restaurants and small commercial kitchens • Auto repair shops and parking garages • Industrial production facilities • Warehouses
- Power generation facilities

#### ADVANCED DETECTORS SELLING POINTS

- Unique detection reliability and No False Alarm Guarantee provided by **ASAtchnology**
- Fast, reliable detection of smoke, heat, and carbon monoxide
- Earliest detection of CO-generating fumes, also independently from fire, with the CO detector
- Enhanced life safety provided by 20+ selectable fire detection profiles
- Adjustable detection profiles guarantee quick, cost-efficient adaptation to environmental conditions
- Forward/backward light scattering is a green solution that replaces ionization

#### Audible Bases

Combine Cerberus PRO detectors with audible sounder bases. The bases attach to the detector to provide alarm notification through the detector rather than through a separate signaling device. Siemens ABHW-4 intelligent audible bases include the ABHW-4B and ABHW-4S bases. Sounder bases offer new and innovative features including:

- Sleeping Area Sounder Base with 520 Hz
- Temporal 3 & 4 (CO) life safety and other tones
- Loop powered version with standard tone (3 K Hz)
- Individual control
- One footprint
- Low current draw

Previous



[16]



Next

Intro >

50 Point Panel >

250/500 Point Panel >

Intelligent Voice  
Communication System >

Detectors >

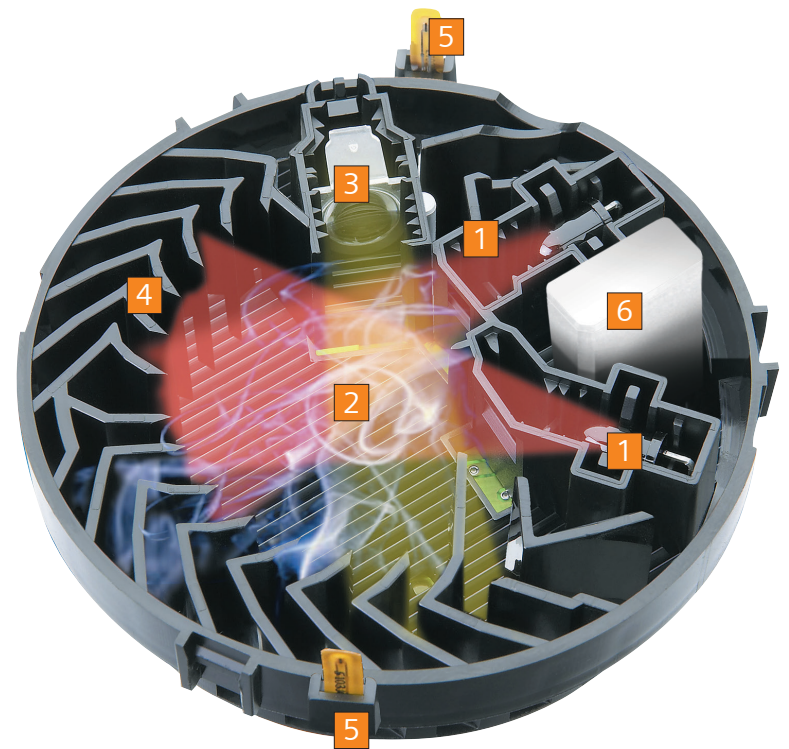
## Advanced Detectors

Featuring Unique ASAtechnology

Multi-criteria fire detector with forward/backward light scattering technology and additional CO sensor for enhanced detection and carbon monoxide Life Safety.

### LEGEND

- 1 Two IR light sources
- 2 The rays of the two IR light sources are scattered by smoke particles in the sampling chamber and strike the light receiver.
- 3 IR receiver: the special position of the two IR light sources helps to distinguish between light and dark smoke particles due to forward and backward light dispersion.
- 4 The patented labyrinth absorbs light emitted by the light sources, thus preventing random reflection. It also captures small fibers and dust particles so that they do not enter the sampling chamber.
- 5 Redundant temperature sensors (two) measure the temperature.
- 6 The monitored CO sensor measures the CO concentration.



Previous



[17]



Next

[Intro >](#)

[50 Point Panel >](#)

[250/500 Point Panel >](#)

[Intelligent Voice  
Communication System >](#)

[Detectors >](#)

# Advanced Detectors

## Features & Benefits

Advanced Multi-criteria fire detector, OOH941:	
ASAt <sup>®</sup> technology	Offers highest detection security with excellent early detection and rejection of deceptive phenomena.
20+ Selectable Detection Profiles	Guarantees quick, cost-efficient adaptation to environmental conditions with adjustable detection profiles.
Dual Optics (forward/ backward light scattering) and Dual Thermal Sensors	Features enhanced detection capability equivalent to ionization detectors that heightens their immunity to deceptive phenomena and increases their detection capability and reliability. Should one sensor fail, the detectors will still provide fail-safe operation. This also makes them a great “green” solution.
No False Alarm Guarantee	Eliminates nuisance alarms and confirms reliable detection.
UL-listed as a high sensitivity pre-alarm	Handles sophisticated applications requiring exceptional reliability.
NFPA 76 Compliant (Telecommunication Standard) as classified as VEWFD (Very Early Warning Fire Detector)	Creates new business opportunities and high sensitivity for data centers or any application that requires very early detection, where maintaining business continuity is desired.
RoHS Compliant	Meets the standards regarding the Restriction of the Use of Certain Hazardous Substances in Electrical and Electronic Equipment.
8 Selectable temperature settings, ranging from 135°F (57°C) to 175°F (79°C)	Handles most application needs with a variety of settings.
Offers programmable options for Fixed Temperature, Rate-of-Rise, and a selectable “Low Temperature” warning should the temperature drop below 40°F (4°C)	Enables the additional flexibility to address any application with the selectable low temperature setting.

## Advanced Detectors

### Features & Benefits

Advanced Multi-criteria Fire Detector, OOH941:	
Identical features to the OOH941, plus an additional CO Sensor	Responds very quickly and reliably to fire and as Multi-criteria (smoke, heat & CO). Detects CO-generating fires as well as Carbon Monoxide detection for life safety gas detection.
Selectable as a Multi-criteria Addressable Detector, Smoke Detector, Heat Detector or Independent CO Detector	Cost-effectively complies with life safety standards – only one detector is needed for fire and CO (instead of two)
UL 2075 Listed as a CO Life Safety Detector and meets NFPA 720 Requirements	Cost-effectively complies with life safety standards – only one detector is needed for fire and CO (instead of two)
<i>ASAt</i> technology	Sophisticated applications require exceptional technology. These detectors feature our unique and dynamic <i>ASAt</i> technology, which makes them highly reliable in preventing false alarms caused by deceptive on-site phenomena, such as machine exhaust gases, dust, or steam
20+ Selectable detection application profiles	Provides field programmable, customizable supervisory signals for temperature or CO levels
Dual optics (forward/ backward light scattering) and dual thermal sensors	Enhanced detection to both smouldering and flaming fires equivalent to ionization detectors. Heightens their immunity to deceptive phenomena and increases their detection capability and reliability. Should one sensor fail, the detectors will still provide fail-safe operation. This also makes them a great “green” solution.
8 selectable temperature settings, ranging from 135°F (57°C) to 175°F (79°C)	Meets most application needs for heat detection. with a variety of field configurable temperature alarm settings.
Offers programmable options for fixed temperature, rate-of-rise, and a selectable “Low Temperature” warning should the temperature drop below 40°F (4°C)	Provides additional flexibility to address any application with the selectable low temperature setting.
No False Alarm Guarantee	Eliminates nuisance alarms and confirms reliable detection.
UL-listed and FM approved as a high sensitivity pre-alarm	Handles sophisticated applications that require Very Early Fire Detection.
NFPA 76 Compliant (Telecommunication Standard) as classified as VEWFD (Very Early Warning Fire Detector)	Creates new business opportunities.
RoHS Compliant	Meets the standards regarding the Restriction of the Use of Certain Hazardous Substances in Electrical and Electronic Equipment.

Previous



[19]



Next

Intro >

50 Point Panel >

250/500 Point Panel >

Intelligent Voice  
Communication System >

Detectors >

# Standard Detectors

## Overview

Standard detectors are an economical, reliable solution for standard application. Detectors from both lines can be used together in a single network, allowing you to manage diverse detection requirements with one detector family and one system.

### Typical application areas for standard detectors:

Backed by many years of field experience and proven under numerous operating conditions, the standard fire detectors provide comprehensive safety. They offer very high performance on the basis of their advanced detection algorithms, making them a great choice in standard environmental conditions where only occasional deceptive phenomena occur, in environments such as:

• Retail stores • Restaurants • Offices • Hotel rooms



### STANDARD DETECTORS SELLING POINTS

- State-of-the-art detection algorithms
- Designed with capabilities to use existing wiring
- Field-selectable application profiles
- Cost-effective range of detectors for standard applications
- Rejects deceptive phenomena that may cause false alarms
- Tri-color detector status LED with 360° viewing
- Wide operating temperature range suitable for use in the most demanding applications
- Ability to provide early detection of smoke and products of combustion present in air moving through an HVAC duct

Previous



[20]



Next

[Intro >](#)

[50 Point Panel >](#)

[250/500 Point Panel >](#)

[Intelligent Voice  
Communication System >](#)

[Detectors >](#)

## Standard Detectors

### Features & Benefits

Standard Multi-criteria Fire Detector OH921:	
Multi-criteria addressable detector that incorporates photoelectric and thermal sensors	Provides enhanced detection to a wide range of products of combustion, while offering superior rejection to nuisance-alarm sources.
Modern, accurate and shock resistant thermistor	Senses temperature changes.
Field-selectable application profiles	Detects fires reliably and efficiently.
Existing wiring may be used	Minimizes costs on material and installation in retrofit cases.
Utilizes SureWire technology	Helps eliminate installation errors and reduce installation time by up to 25%.
Self Testing	Performs complete diagnostics every 10 seconds and self-monitors for sensitivity within UL Listed limits.
Tri-color detector status LED with 360° viewing	Capable of notifying normal supervisory, trouble, and alarm conditions.

Standard Optical (photoelectric) Smoke Detector OP921:	
Photoelectric, light-scattering, addressable detector	Ensures enhanced sensitivity to actual fires and practically eliminates false alarms.
Utilizes advanced software algorithms	Analyzes signals to provide highly stable and accurate smoke detection.
Operating temperature range of 32°F (0°C) to 120°F (49°C)	Wide operating temperature range suitable for use in the most demanding applications.
UL listed for direct in-duct plenum usage (without duct housing)	Ability to provide early detection of smoke and products of combustion present in air moving through an HVAC duct.
Tri-color detector status LED with 360° viewing	Notifies for normal supervisory, trouble, and alarm conditions.
Utilizes SureWire technology	Helps eliminate installation errors and reduce installation time by up to 25%.
Self Testing	Performs complete diagnostics every 10 seconds and self-monitors for sensitivity within UL Listed limits.

Standard Thermal (Heat) Detector HI921:	
Provides 7 field-selectable settings in the 135° – 174°F temperature range	Provides a flexible field solution for multiple temperature settings with one heat detector.
Tri-color detector status LED with 360° viewing	Notifies for normal, supervisory, trouble, and alarm conditions.
Compatible with Model DPU	Uses the standardized Siemens DPU (device programmer / loop tester) for easy programming and testing in the field.
Provides a low-temperature warning at 40°F	Detector can be specifically set to monitor for freezing pipes for sprinkler system supervision as per NFPA 72 requirements.
Utilizes SureWire technology	Helps eliminate installation errors and reduce installation time by up to 25%.
Field programmable as rate-of-rise or fixed temperature	Flexible field adjustable settings meeting specifications and customer requirements.

Previous



[21]



Next

[Intro >](#)

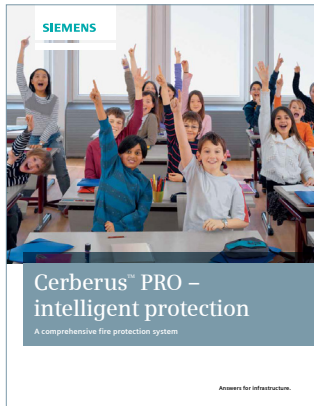
[50 Point Panel >](#)

[250/500 Point Panel >](#)

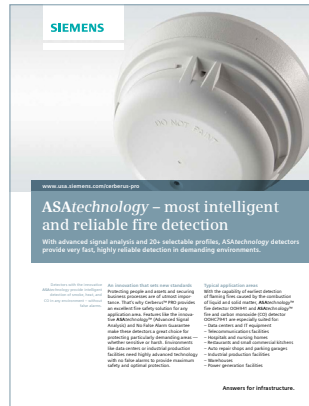
[Intelligent Voice  
Communication System >](#)

[Detectors >](#)

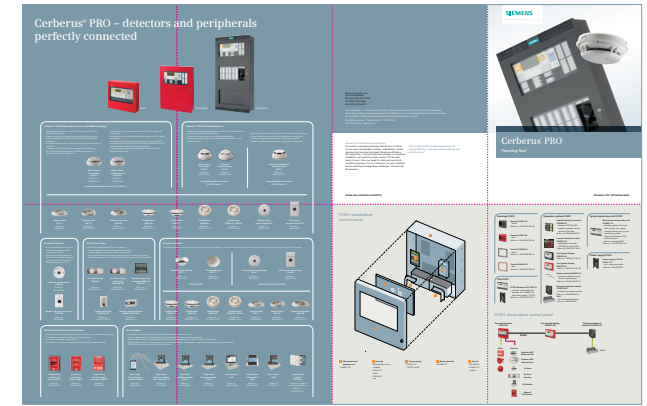
## Sales Collateral



**Cerberman® Pro System Brochure**  
153-FIS-112



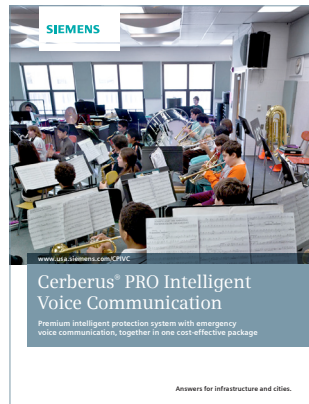
**ASAtchnology Flyer**  
153-FIS-113



**Cerberman® Pro Planning Tool Poster**  
153-FIS-114



**FC901 - 50 Point Fire Control Panel Flyer**  
153-FIS-115



**Cerberman® PRO Intelligent Voice Communication Brochure**  
153-FIS-132

> Find the tools you need on Fire Partners or Collateral Corner.

Previous



[22]



Next

Intro >

50 Point Panel >

250/500 Point Panel >

Intelligent Voice  
Communication System >

Detectors >

Siemens Industry, Inc.  
8 Fernwood Road  
Florham Park, NJ 07932  
Tel (973) 593-2600  
Fax (973) 593-6670

The information in this document contains general descriptions of technical options available, which do not always have to be present in individual cases. The required features should therefore be specified in each individual case at the time of closing the contract.

All rights reserved. Printed in USA  
©2014 Siemens Industry, Inc.